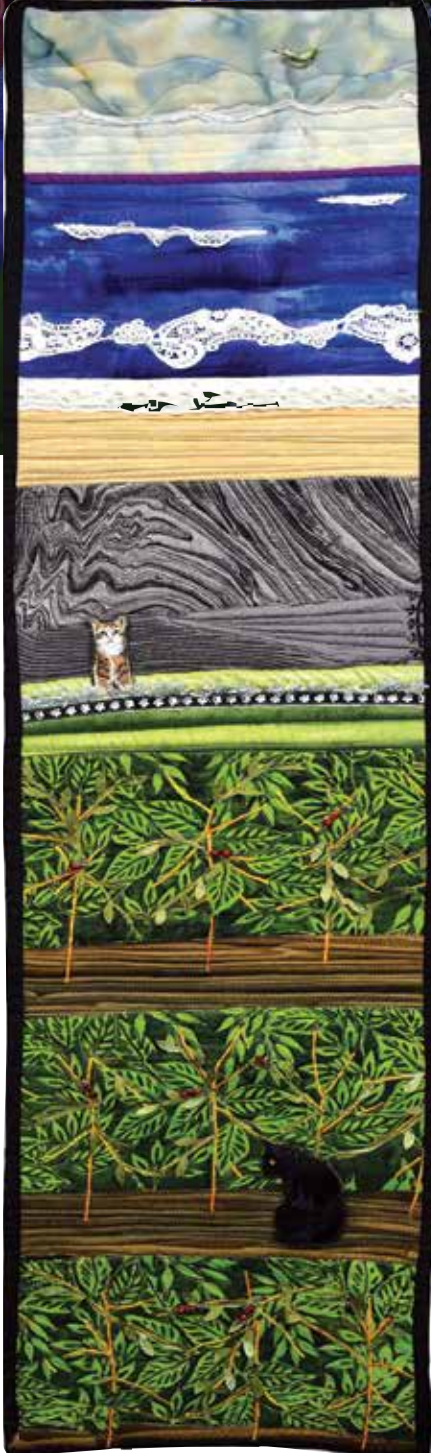




TALENT NIGHT 11/8



NOVEMBER

COFFEE ☪ FOOD ☪ ART ☪ CULTURE ☪ OUTDOORS

HAPPENING THROUGHOUT THE FESTIVAL

KONA HISTORICAL SOCIETY'S KONA COFFEE LIVING HISTORY FARM TOUR

Kona Coffee Living History Farm

82-6199 Mamalahoa Hwy.,
Captain Cook
10 a.m. – 2 p.m.

Self-guided farm tour tells the story of Kona's coffee pioneers during the early 20th century. Ticket purchase on-site required.

#COFFEELOVER: A KONA COFFEE CULTURAL FESTIVAL EXHIBITION & JURIED SHOW

Donkey Mill Art Center

78-6670 Mamalahoa Hwy., Holualoa
10 a.m. – 6 p.m.

Adult and youth art celebrates Kona coffee culture. Taste Kona coffee and browse handmade coffee-themed works.

KONA COFFEE FESTIVAL QUILT SHOW

Kona Hawaiian Quilt Museum and Gallery

75-5706 Kuakini Hwy., Suite 112,
Kailua Kona
10 a.m. – 5 p.m.

Coffee and island themed quilts from local quilters.

GREENWELL FARMS: SEED TO CUP FARM TOUR

Greenwell Farms

81-6581 Mamalahoa Hwy.,
Kealahou
Two farm tours daily:
10 a.m. and 2 p.m.

A fascinating journey into the history, the farming, the processing and tasting of 100% pure Kona Coffee! Participants will leave with a new and enlightened view of Kona's most famous product. Tour starts at Greenwell Farms Gift Shop.



1 Friday

KONA COFFEE CULTURAL FESTIVAL LANTERN PARADE

Alii Drive, Kailua Pier to Hale Halawai, Kailua-Kona

6 p.m. – 9 p.m.

With glowing procession of light, music and color, Alii Drive lights up as the parade winds its way from Kailua Pier to Hale Halawai.

2 Saturday

THE HOLUALOA COFFEE AND ART STROLL

Holualoa Village

9 a.m. – 3 p.m.

Visit galleries in this quaint art district and choose samples from 35+ Kona coffee farms.



CULTURAL ACTIVITIES & DEMONSTRATIONS WITH LOCAL ARTISTS

Donkey Mill Art Center

78-6670 Mamalahoa Hwy., Holualoa
10 a.m. – 6 p.m.

Lauhala Weaving, Ti Leaf Lei-Making, Bamboo Stamping and Papermaking with local fibers. RSVP at donkeymillartcenter.org and on-site donation.

UCC HAWAII MISS KONA COFFEE SCHOLARSHIP COMPETITION

Aloha Theater

79-7384 Hawaii Belt Rd., Kealahou
Doors open at 5:30 p.m.

Pageant starts at 6:00 p.m.

An official preliminary pageant for the Miss Hawaii and Miss America Scholarship Competition. Candidates compete in interview, onstage question, evening gown, talent, and social impact statement. Tickets are \$35 and can be purchased at apachawaii.org.

konacoffeefest.com



3 Sunday

IRUKA HAWAII EXPERIENCES LITTLE MISS KONA COFFEE SCHOLARSHIP PROGRAM

Aloha Theater

79-7384 Hawaii Belt Rd., Kealahou
3 p.m. – 5 p.m.

Kona's premier youth pageant featuring the youngest of our Hawai'i Island young ladies ages 4-16 who will vie for the crowns learning from a "stage" of opportunities to help groom confidence, poise and self-development. Tickets are \$25 and can be purchased at apachawaii.org.



KTA SUPER STORES KONA COFFEE RECIPE CONTEST

Hawaii Community College Palamanui

73-4225 Ane Keohokalole Hwy, Kailua-Kona

Big Island Showcase opens at 10 a.m.

Recipe Contest doors open at 11 a.m.

A tasty showcase of prized original Kona Coffee recipes in two categories: sweet and savory. Chef demonstrations and local artisans featured at the Big Island Showcase.

UCC HAWAII KONA COFFEE PICKING & FARM EXPERIENCE

UCC Hawaii Kona Coffee Estate

75-5568 Mamalahoa Hwy., Holualoa

Two farm tours, meet at the farm's roadside kiosk:

10 a.m. to Noon

1 p.m. to 3 p.m.

Try your hand at picking ripe coffee cherry and witness how the harvest transforms to coffee in your cup.

4 Monday

KONA COFFEE BARISTA TRAINING

Kona Coffee & Tea

74-5588 Palani Rd., Kailua-Kona
5 p.m. – 9 p.m.

Training by seasoned coffee educators, trainers and professionals both local and abroad, guiding a robust coffee education experience in manual brewing techniques, espresso techniques, milk steaming, and latte art. Competition heats up later in the week at the Kona Coffee Latte Art Throwdown.



6 Wednesday

HAWAII COFFEE ASSOCIATION BENEFIT DINNER AND KONA COFFEE CUPPING COMPETITION AWARDS PRESENTATION



**Courtyard by Marriott King
Kamehameha's Kona Beach Hotel**

75-5660 Palani Rd, Kailua-Kona
6 p.m. – 10 p.m.

Certified cupping judges have spent three days scoring Kona's top farms in the prestigious Kona Coffee Cupping Competition and will be on-hand to discuss results. Excitement is brewing as winners will be announced during the evening benefit. In addition, network with Hawaii's coffee industry as they celebrate the harvest. Live and silent auctions. Dinner \$65.00 with a Festival button and can be purchased online at hawaiicoffeeassoc.org.



7 Thursday

INTERCULTURAL CONCERT WITH KAZE NO NE

**Makao County Pavilion
(Old Airport)**

75-5500 Kuakini Hwy., Kailua-Kona
5 p.m. Okonomiyaki
6 p.m. – 8 p.m. Concert

Performance by Kaze No Ne (Electric Organists and Singers). Okonomiyaki and other Japanese snack and garnishment items will be available for purchase.

#COFFEELOVER: A KONA COFFEE CULTURAL FESTIVAL EXHIBITION ARTISTS' RECEPTION

Donkey Mill Art Center

78-6670 Mamalahoa Hwy., Holualoa
6 p.m. to 8 p.m.

Celebrate with featured artists and enjoy a potluck dinner. Kona Brewing Company will be serving their Pipeline Porter, made with 100% Kona coffee. Bring a dish to share.



RECIPE CONTEST 11/3

KONA COFFEE LATTE ART THROWDOWN

Kona Coffee & Tea

74-5588 Palani Rd., Kailua-Kona
6 p.m. – 9 p.m.

Bringing the barista community together, this friendly competition gives participants a chance to apply the skills in a fun, high-energy environment. Winner takes all as local baristas work magic in their cup of 100% Kona Coffee.

8 Friday

KONA COFFEE 101 SEMINAR

**Makao County Pavilion
(Old Airport)**

75-5500 Kuakini Hwy., Kailua-Kona
4 p.m. – 5 p.m.

Expert coffee discussion with a focus on Kona's coffee industry.

ALOHA MAKAHIKI CONCERT

**Makao County Pavilion
(Old Airport)**

75-5500 Kuakini Hwy., Kailua-Kona
5:30 p.m. – 7:30 p.m.

Presented by Ua Mau Company
This concert celebrates Makahiki with the authentic original Hula and entertains the audience with traditional Hawaiian Musicians from Honolulu and Ni'ihau. Delicious food and beverages will be available for purchase.



SUGAI KONA COFFEE TALENT NIGHT

Aloha Theater

79-7384 Hawaii Belt Rd, Kainaliu
6 p.m. – 9 p.m.

Kona's talented folks take the stage with spirited multi-cultural musical and dance performances.



FOOD BOOTHS AT HO'OLAULEA 11/9

9 Saturday

100% PURE KONA COFFEE HALF MARATHON

Coconut Grove Marketplace
75-5809 Alii Dr, Kailua-Kona
Marathon starts at 5:30 a.m., Half Marathon starts at 6:00 a.m.
4th annual 100% Pure Kona Coffee Marathon and Half Marathon. New this year is the Marathon distance. Run the scenic coast of Kailua-Kona down Ali'i Drive to the infamous "Pit" at the "End of the World". Enjoy views of the Pacific Ocean as you complete your chosen distance!



KONA COFFEE FARMERS MARKET PLACE Makaeo County Pavilion (Old Airport)

75-5500 Kuakini Hwy., Kailua-Kona
9 a.m. – 4 p.m.
Sponsored by Hawaii Community Federal Credit Union
Kona farmers will be on hand with fresh brewed coffee available to taste and purchase.

KONA COFFEE CULTURAL DEMONSTRATIONS & WORKSHOPS

**Makaeo County Pavilion
(Old Airport)**
75-5500 Kuakini Hwy., Kailua-Kona
9 a.m. – 4 p.m.
Sponsored by Hawaii Community Federal Credit Union
Local artisans from Hawaii's multi-ethnic groups share their know-how with hands-on crafts.



KONA COFFEE CULTURAL FESTIVAL HOOLAULEA Makaeo County Pavilion (Old Airport)

75-5500 Kuakini Hwy., Kailua-Kona
Ethnic Food Market
Festival of Arts & Crafts
All Day Entertainment
9 a.m. – 4 p.m.
Lei Contest
10 a.m. – 1 p.m.
Sponsored by Hawaii Community Federal Credit Union
A day of Kona coffee celebration with live entertainment, arts and crafts, an amazing lei contest, educational historic exhibits, ikebana and traditional Japanese calligraphy. Musical entertainment all day including 14-time Na Hoku Hanohano award winner Mark Yamanaka who has become one of Hawaiian music's iconic voices.

TRANSPARENCY, TRACEABILITY, QUALITY:

Coffee Talk with Brittany Horn and Madeleine Longoria Garcia
Donkey Mill Art Center
78-6670 Mamalahoa Hwy., Holualoa
10 a.m. – 11:30 a.m.

These two women are coffee culture lovers! Seed to cup is constant, tedious, hard work. Come learn about collaborating on ideas for quality improvement, cupping classes, experimental processing methods, and more.



10 Sunday

KONA HISTORICAL SOCIETY ANNUAL FARM FEST

Kona Coffee Living History Farm
82-6066 Mamalahoa Hwy, Captain Cook
10 a.m. to 3 p.m.
The Kona Historical Society celebrates two decades of museum programs that has brought Kona's history to life. Farm fest features entertainment, food, cultural presentations, special exhibits and hands-on activities. Park and catch the free shuttle at Kealakekua Ranch Center.

LITTLE MISS KONA COFFEE SCHOLARSHIP BOWLING FUND-RAISER

KBXtreme Family Fun Center
75-5591 Palani Rd., Kailua Kona
10 a.m. to 1 p.m.
Bowl and celebrate with your favorite "Little Miss" contestant while raising much-needed scholarships. \$10 per bowler, 6 per team limit, shoes not included.
Two reserved time slots
10 a.m. – 11 a.m.
11:30 a.m. – 12:30 p.m.

THE GRAND FINALE... A TASTE OF KONA!

The Hawaii Lawn at the Sheraton Kona Resort & Spa at Keauhou Bay
78-128 Ehukai St, Kailua-Kona
5 p.m. – 9 p.m.
An evening of culinary delights featuring local Island Chefs and a fabulous silent auction. Music and dancing under the stars with award-winning Kahulanui- a nine piece Hawaiian Swing Band from the Big Island of Hawaii. Certified cupping judges have spent three days scoring Kona's top farms in the prestigious Kona Coffee Cupping Competition and will be on-hand to discuss results. Tickets are \$50 general and \$80 VIP (includes table seating) and can be purchased at Kona Coffee and Tea, Kona Boys in Kealakekua or online at konacoffeeandtea.com/events.



EVENTS SUBJECT TO CHANGE

ALL EVENTS REQUIRE A FESTIVAL BUTTON FOR ENTRY



konacoffeefest.com